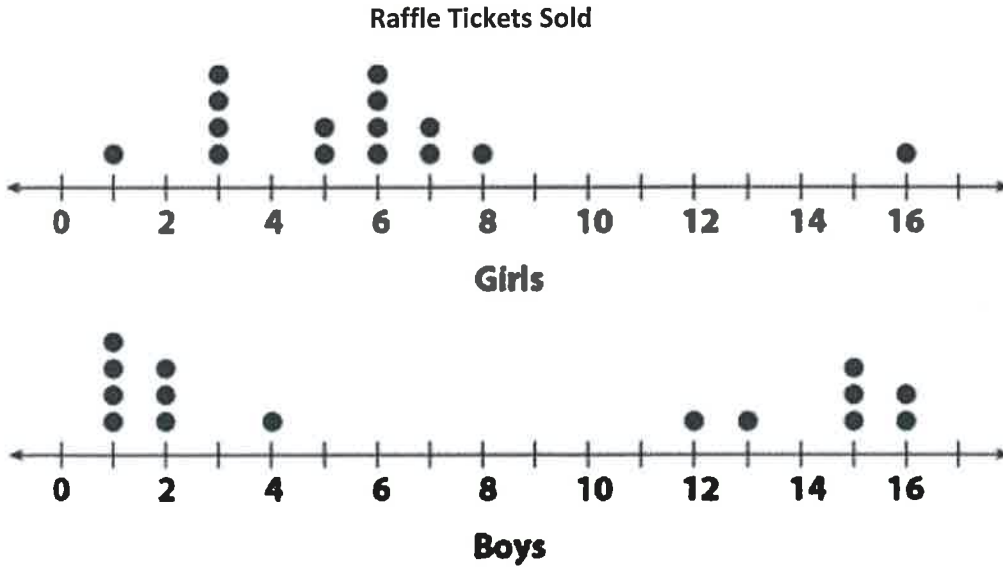


Name: KEY Period: _____ Date: _____

Test Review-Analyze Graphs, Identify Functions & Mean Absolute Deviation

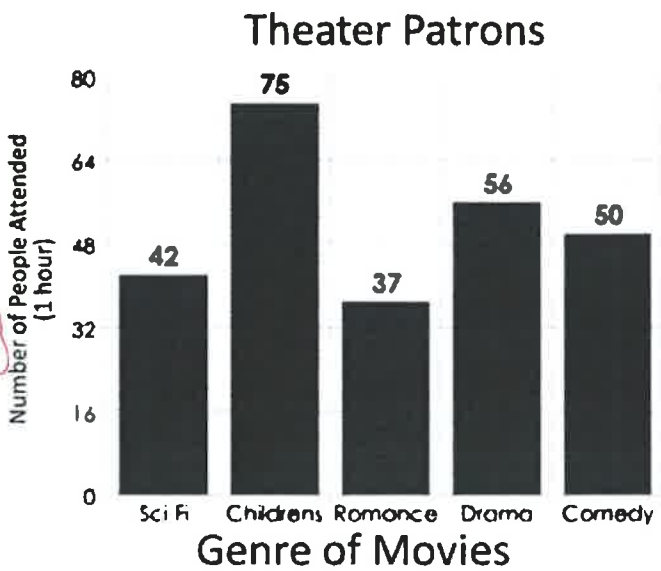
The dot plot below displays the number of raffle tickets sold by boys and girls during a school fund-raiser.



1. Find the spread for the boys. $16 - 1 = 15$
2. Find the median for the girls. 6
3. Find the mode for the boys. 1

The graph below shows the number of people attending different kinds of movies in a one hour time frame at the theater.

4. How many people attended a comedy or romance movie? $50 + 37 = 87$
5. How many total Theater Patrons were there in the one hour time frame? $42 + 75 + 37 + 56 + 50 = 260$
6. Approximately what percent of the patrons attended a Sci Fi or a romance movie? $\frac{79}{260} = \frac{x}{100} = 260x = 7900 = x \approx 30\%$
7. What movie genre had twice as many attend as the Romance genre?
CHILDRENS



Describe the difference in the shapes of the dot plots for Camille and Faith's number of hours babysitting.

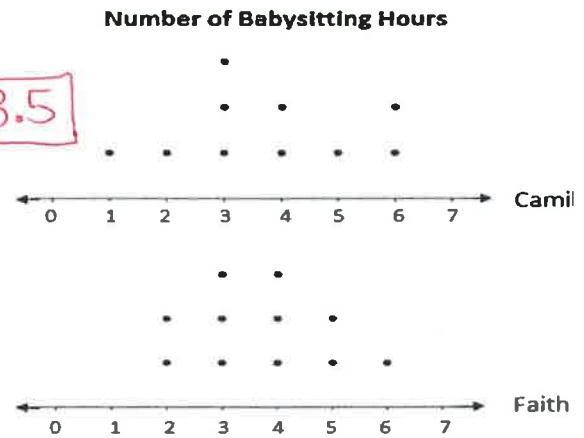
CAMILLE = SKEWED LEFT FAITH = SYMMETRIC

8. What value represents the center represented in Camille's data? $3 \frac{1}{2}$ ARE CENTER NUMBERS = 3.5

SO AVERAGE THE TWO NUMBERS

9. What value represents the center represented in Faith's data?

4



10. What is the mean of the following data set {41, 9, 23, 15, 33, 7}? FIND THE AVERAGE

21.3

Use the circle graph to answer questions 11-13

11. How many freshmen attended state college in Fall 2002?

$$6542 \cdot 0.40 = 2616.8 = 2617$$

12. What percent of the students enrolled are either Juniors or Seniors?

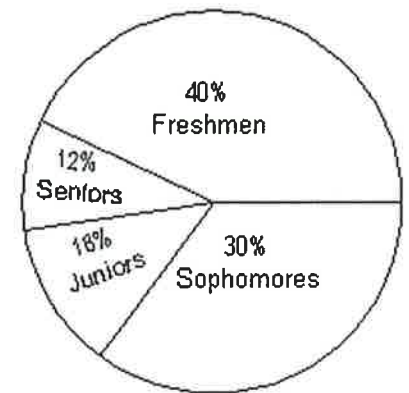
$$12\% + 18\% = 30\%$$

13. Write an equation that represents the total number of sophomores enrolled.

$$\frac{x}{.3} = 6542$$

Students Enrolled at State College in Fall 2002

Total: 6542 students



Use the box and whisker plot to answer questions 14-16

14. What is the upper extreme on the graph?

10

15. What is the IQR?

$$8 - 3 = 5$$

16. What is the median?

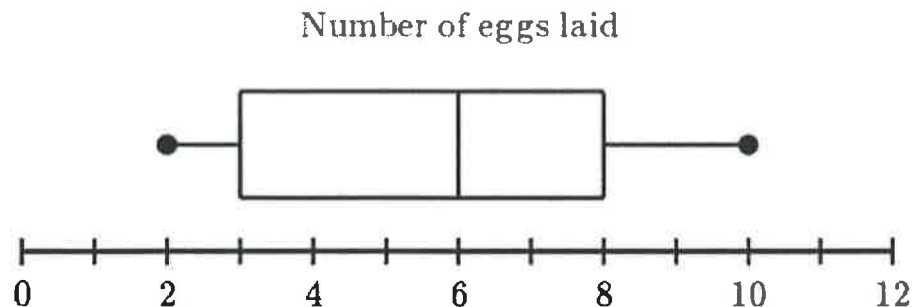
6

17. What is the lower quartile?

3

18. What percent of the graph is 3 or less?

25%



For questions 19-26, answer each question as it relates to finding the Mean Absolute Deviation.

Sherry has an after-school job at Papa John's. Her boss keeps track of how many pizzas she sells each day. During her last five days of work, she served 29, 58, 15, 75, and 22 pizzas.

19. Find the sum of the pizzas served. = 199
20. Find the mean of the pizzas served. = 39.8
21. Find the Mean Absolute Deviation of the pizzas served.

21.36

The Smith and Jones families each have six family members. They wanted to compare the differences in ages between the two families. The ages of the members of Smith family are 45, 43, 13, 11, 5, and 2, while the Jones family members are 45, 39, 17, 16, 4, and 1. Find the mean absolute deviation and range in ages for each family.

22. Find the mean of the Smith Family. = 19.8 $\bar{3}$
23. Find the mean of the Jones Family. = 20.3
24. Find the Mean Absolute Deviation of Smith Family. = 16.1
25. Find the Mean Absolute Deviation of Jones Family. = 14.4
26. Which family has the greatest difference in ages?

SMITH FAMILY

For each question below, decide whether the relation is a function.

27.

FUNCTION

x	y
-3	0
-1	1
1	2
3	3

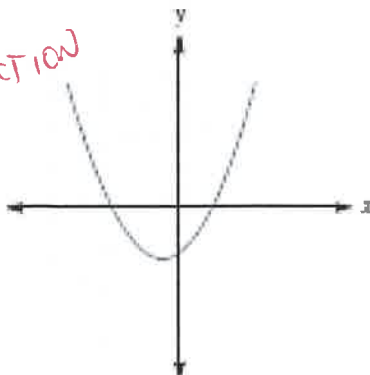
28.

NOT
FUNCTION

x	y
-2	0
-1	1
0	2
0	3

29.

FUNCTION



30.

NOT
FUNCTION

